

BizLink

TYPE LAP-35 / LAP-18

Plug for safety class II

2-pole contour plug

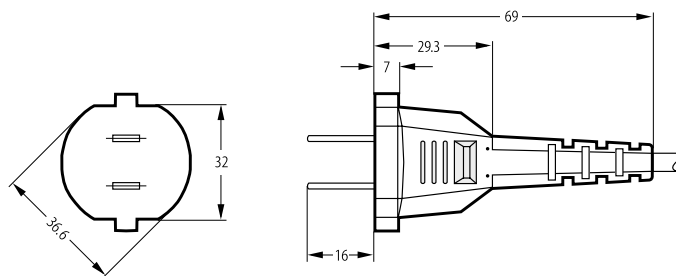
GB 1002, GB 2099.1

6 A/10 A, 250 V~

solid metal pins, nickel-plated



Technical drawing



Approvals



Suitable flexible cord types

60227 IEC 52	2 x 0.5	60227 IEC 52	2 x 0.75
60227 IEC 53	2 x 0.75	60227 IEC 53	2 x 1
60227 IEC 53	2 x 1.5	60245 IEC 53	2 x 0.75
60245 IEC 53	2 x 1	60245 IEC 57	2 x 0.75
60245 IEC 57	2 x 1	60245 IEC 66	2 x 1
60245 IEC 66	2 x 1.5	60227 IEC 56	2 x 0.5
60227 IEC 56	2 x 0.75	60227 IEC 57	2 x 0.75
60227 IEC 57	2 x 1		