

TYPE LAP-26

Plug for safety class I

2-pole plug with earthing-contact

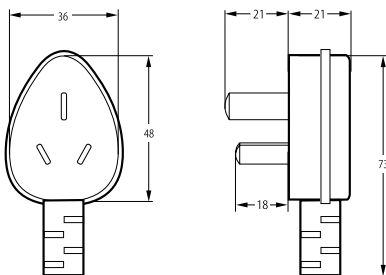
GB 1002, GB 2099.1

16 A, 250 V~

solid metal pins, nickel-plated



Technical drawing



Approvals



Suitable flexible cord types

60227 IEC 53	3 x 0.75	60227 IEC 53	3 x 1
60227 IEC 53	3 x 1.5	60227 IEC 57	3 x 0.75
60227 IEC 57	3 x 1	60227 IEC 57	3 x 1.5
245 IEC 51	3 x 0.75	245 IEC 51	3 x 1
60245 IEC 53	3 x 0.75	60245 IEC 53	3 x 1
60245 IEC 53	3 x 1.5	60245 IEC 66	3 x 1
60245 IEC 66	3 x 1.5	60245 IEC 57	3 x 0.75
60245 IEC 57	3 x 1	60245 IEC 57	3 x 1.5