

BizLink

TYPE 380

Plug for safety class I

2-pole plug with earthing-contact, available with double insulation as TYPE 380 C

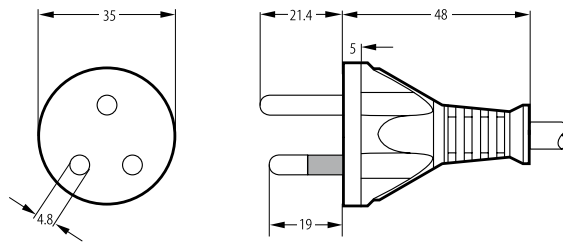
TIS 166-2549

16 A, 250 V~

pins provided with insulating sleeves, nickel-plated



Technical drawing



Approvals

Suitable flexible cord types

H03VV-F	3 G 0.5	H03VV-F	3 G 0.75
H03V2V2-F	3 G 0.5	H03V2V2-F	3 G 0.75
H05VV-F	3 G 0.75	H05VV-F	3 G 1
H05VV-F	3 G 1.5	H05V2V2-F	3 G 0.75
H05V2V2-F	3 G 1	H05V2V2-F	3 G 1.5
H05RR-F	3 G 0.75	H05RR-F	3 G 1
H05RN-F	3 G 0.75	H05RN-F	3 G 1
H07RN-F	3 G 1.5		