



Key Features

- Fast Switching Speed
- Low Insertion Loss
- Wide Wavelength Range
- Low Optical Return Loss
- Low Cross Talk

Applications

- Configurable Add/Drop
- Network Route Protection
- R&D Laboratory



Optical Switch/ VOA

1x1/ 1x2/ 2x2 Mechanical Optical Switch

Parameter Specifications: SM Optical Switch

Parameters	Performance Specifications	Units
Wavelength Range	1310+/-40, 1550+/-40	nm
Switching Time	≤ 7.5	ms
Insertion Loss in room temperature (with connector)	≤ 0.8	dB
Cross Talk	≥ 55	dB
Polarization Dependent Loss	0.10	dB
Wavelength Dependent Loss	0.3	dB
Repeatability (100 cycles)	≤ 0.05	dB
Optical Return Loss Loss(with connector)	≥ 45	dB
Life Cycles	≥ 10 ⁷	
Fiber Type	Corning SMF 28e+	
Connector Type	FC, SC, LC (optional)	
Switch Type	Latching or No Latching	
Switching Voltage	4.5-5.5	V
Switching Current	40	mA
Dimension	43.5 x18 x10	mm

Notes:

1. Above spec does not include connector.

Parameter Specifications: MM Optical Switch

Parameters	Performance Specifications	Units
Wavelength Range	850+/-15, 1310+/-40	nm
Switching Time	≤ 7.5	ms
Insertion Loss in room temperature (with connector)	≤ 0.8	dB
Cross Talk	≥ 35	dB
Polarization Dependent Loss	0.20	dB
Wavelength Dependent Loss	0.3	dB
Repeatability (100 cycles)	≤ 0.05	dB
Optical Return Loss Loss(with connector)	≥ 35	dB
Life Cycles	≥ 10 ⁷	
Fiber Type	OM2, OM3, OM4, OM5 (customer optional)	
Connector Type	FC, SC, LC (optional)	
Switch Type	Latching or No Latching (optional)	
Switching Voltage	4.5-5.5	V
Switching Current	40	mA
Dimension	43.5 x18 x10	mm

Notes:

1. Above spec does not include connector.

Operating Conditions

Parameters	Performance Specifications	Units
Maximum Power handling	500	mW
Operating Temperature	0 ~ +65	°C
Storage Temperature	-40 ~ +85	°C
Operation Humidity	5 to 95 % Relative Humidity	

Optical Switch/ VOA

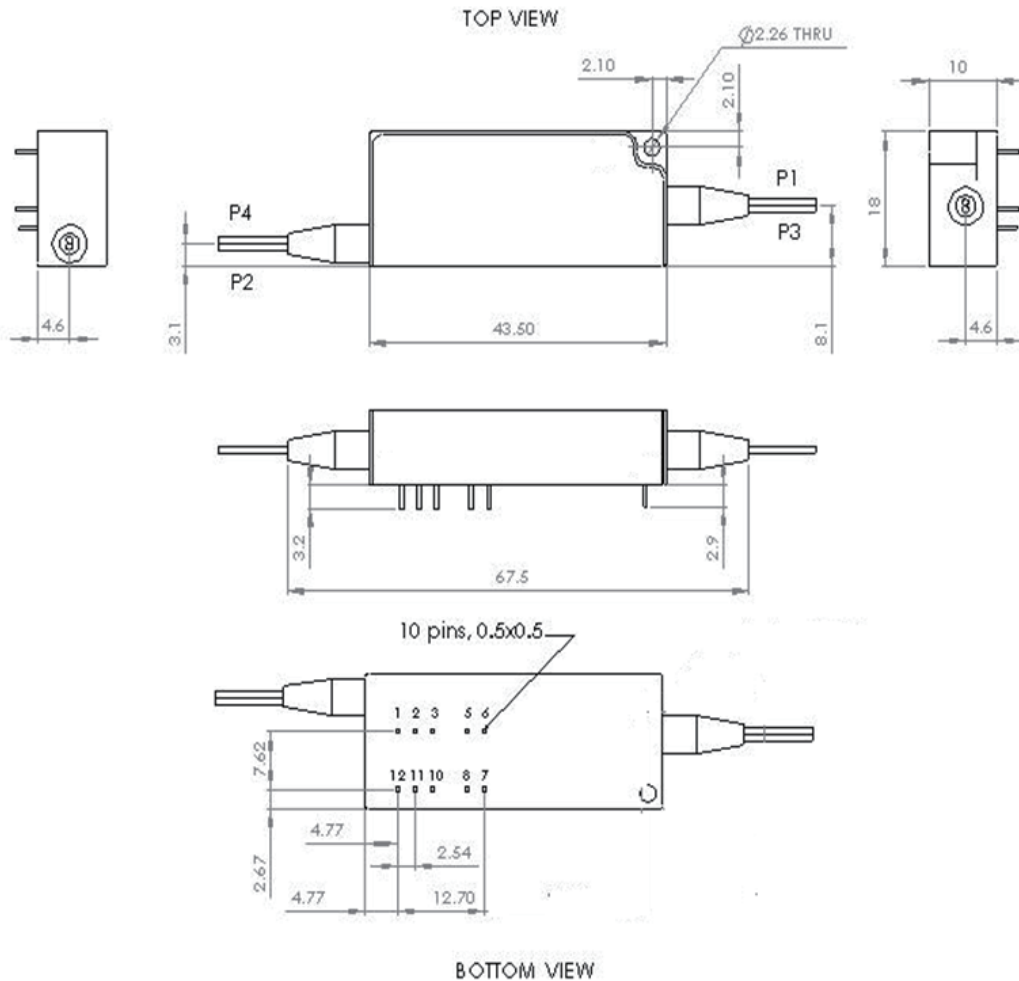
1x1/ 1x2/ 2x2 Mechanical Optical Switch

Electrical Interface:

Optical path	Electrical Drive				Status Sensor			
	Pin 1	Pin 12	Pin 2	Pin 11	Pin 3-5	Pin 3-6	Pin 10-7	Pin 10-8
Port 1-2 Port 3-4	GND	+5V*	0**	0**	Open	Close	Close	Open
Port 1-3 Port 2-4	0***	0***	GND	+5V*	Close	Open	Open	Close



Mechanical Dimensions



Optical Switch/ VOA

1x1/ 1x2/ 2x2 Mechanical Optical Switch



A BizLink Group Company

Part Number Scheme: Optical Switch

S	W	T									N			
---	---	---	--	--	--	--	--	--	--	--	---	--	--	--

Latching Type

L = Latching
N = No Latching

Configuration

11 = 1x1
12 = 1x2
22 = 2x2
14 = 1x4
18 = 1x8
1A = 1X12

Switch Type

B = Bypass
F = Full

Jacket Type

A = 250 um
B = 900 um
C = 2 mm
D = 3 mm

Fiber Type

10 = 1.0 m
15 = 1.5 m
30 = 3.0 m
mn = m.n meters

Fiber Type

1 = SMF-28e+
2 = XB, G657.A1
3 = OM3
4 = OM4
5 = OM5

Connector Type

0 = None M = MTP 12P
2 = FC/UPC N = MTP 24P
3 = FC/APC O = MPO 12P
4 = SC/UPC P = MPO 24P
5 = SC/APC H = MU/UPC
6 = ST/UPC
7 = LC/UPC
8 = LC/APC

Module Density

S = Single
D = Dual
Q = Quad
O = Octo

Wavelength

A = 1290-1330 nm
B = 1525-1575 nm
C = 1525-1610 nm
I = 1290-1330 nm & 1525-1610 nm
K = 840~860 nm

OptiWorks Headquarters

OptiWorks, Inc.

47211 Bayside Parkway, Fremont, CA 94538, USA
Phone +1 510 438 4560
sales@optiworks.com
www.optiworks.com

OptiWorks (Kunshan) Co., Ltd.

Phone +86 512 5763 0880
sales_china@optiworks.com

OptiWorks (Shanghai) Co., Ltd.

Phone +86 021 6485 8787
sales_china@optiworks.com

BizLink International Corp.

Phone +886 2 8226 1000
sales_tw@bizlinktech.com